

EXTENSION

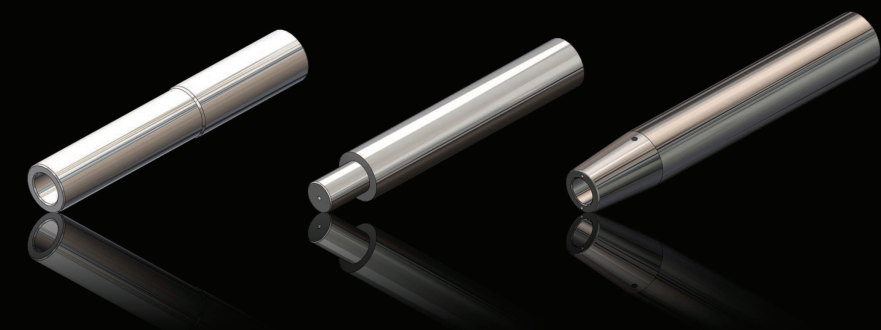
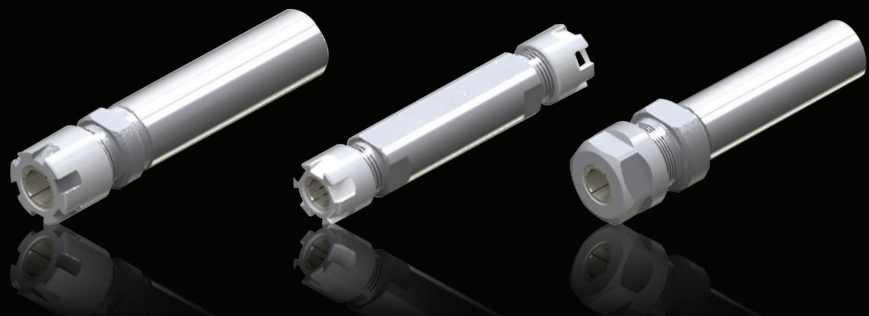


Illustration of Different Match 雙頭龍內冷燒結抗震刀桿組各種組合示意圖

124

任何形式刀桿
(油壓 / 側固 / ER / DC / SK... 等)
Chucks

各系列燒結刀桿
Shrink Fit Chucks

燒結捨棄式刀頭
Shrink Fit Heads

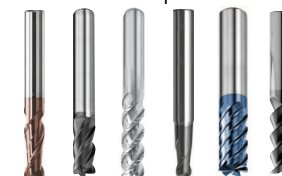
1. 運用雙頭龍設計搭配燒結方式降低偏擺，提高刀具壽命
 2. 低利時代，降低刀具成本
 3. 多樣選擇，靈活運用
1. Reduce the run-out and improve tool life by using dual End Anti-Vibration Shrink Fit Extension.
2. Reduce the cost of cutting tools.
3. Many choices and with more flexible applications.

1. 鑄鋼抗震材質
 2. 多種規格可供選擇
 3. 製作過程較容易
 4. 環保節能最佳選擇
 5. 以燒結方式結合、提供更高精度
 6. 可搭配中心出水
1. Carbide anti-vibration materials.
2. Many specifications for your option.
3. Manufacturing process becomes easier.
4. Best choice for eco-friendly.
5. Higher accuracy by sinter incorporated
6. Work with coolant is available.

內冷中心孔
Internal coolant hole

雙頭龍轉接座
Adapter

1. 震虎、山謙聯名開發 (專利產品，仿冒必究)
 2. 雙頭龍燒結式轉接座 讓您更靈活運用與加工
1. Speed Tiger and YAMAKEN co-branded developed. (Patent Product, All Rights Reserved.)
2. More flexible application by using the adapter of Dual End Anti-Vibration Shrink Fit Extension.



斬露頭角全系列刀具
Power Tips

中心出水鑽頭
Drills/Coolant Drills

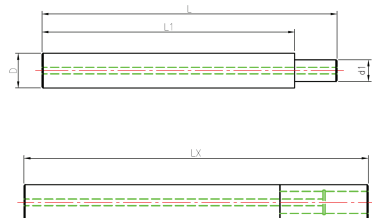
各式鑄鋼材質刀具
Carbide End Mills



SPEED TIGER

■ Dual End Carbide Anti-Vibration Shrink Fit Extension

● 雙頭龍鎢鋼抗震延長桿



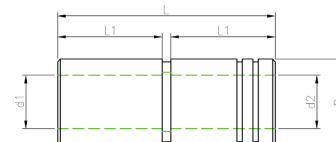
125

MODE	Shank Diameter	d1 Front Diameter	Shank Length	Full Length	Length of Combination
型號	D 柄徑	d1 前端柄徑	L1 柄長	L 總長	LX 組合總長
S1006-L120	10	6	87	103	120
S1006-L160			127	143	160
S1006-L200			167	183	200
S1006-L300			267	283	300
S1208-L120	12	8	85	102	120
S1208-L160			125	142	160
S1208-L200			165	182	200
S1208-L300			265	282	300
S1610-L120	16	10	79	99	120
S1610-L160			119	139	160
S1610-L200			159	179	200
S1610-L300			259	279	300
S2012-L120	20	12	79	99	120
S2012-L160			119	139	160
S2012-L200			159	179	200
S2012-L300			259	279	300
S2516-L120	25	16	71	95	120
S2516-L160			111	135	160
S2516-L200			151	175	200
S2516-L300			251	275	300
S3220-L120	32	20	59	89	120
S3220-L160			99	129	160
S3220-L200			139	169	200
S3220-L300			239	269	300



■ Adapter

● 雙頭龍轉接座



材質：SKD 鋼材
Material: SKD Steel

126

MODE	Diameter	d1 Diameter	d2 Diameter	Min. Shrink Length	Full Length
型號	D 外徑	d1 刀桿端孔徑	d2 刀具端孔徑	L1 最短燒結長度	L 總長
SD10-EZ06-EZ04-033	10	6	4	16	33
SD10-EZ06-EZ06-033			6		
SD12-EZ08-EZ04-035	12	8	4	17	35
SD12-EZ08-EZ06-035			6		
SD12-EZ08-EZ08-035			8		
SD16-EZ10-EZ06-041	16	10	6	20	41
SD16-EZ10-EZ08-041			8		
SD16-EZ10-EZ10-041			10		
SD20-EZ12-EZ08-041	20	12	8	20	41
SD20-EZ12-EZ10-041			10		
SD20-EZ12-EZ12-041			12		
SD25-EZ16-EZ10-049			10		
SD25-EZ16-EZ12-049	25	16	12	24	49
SD25-EZ16-EZ16-049			16		
SD32-EZ20-EZ12-061			12		
SD32-EZ20-EZ16-061	32	20	16	30	61
SD32-EZ20-EZ20-061			20		

獲台灣專利 字號：新型第 M 515426 號
Patent of Taiwan No.: M 515426
獲中國專利 字號：201520716712.3
Patent of China No.: 201520716712.3